

WitsEnds Software – ChekScan

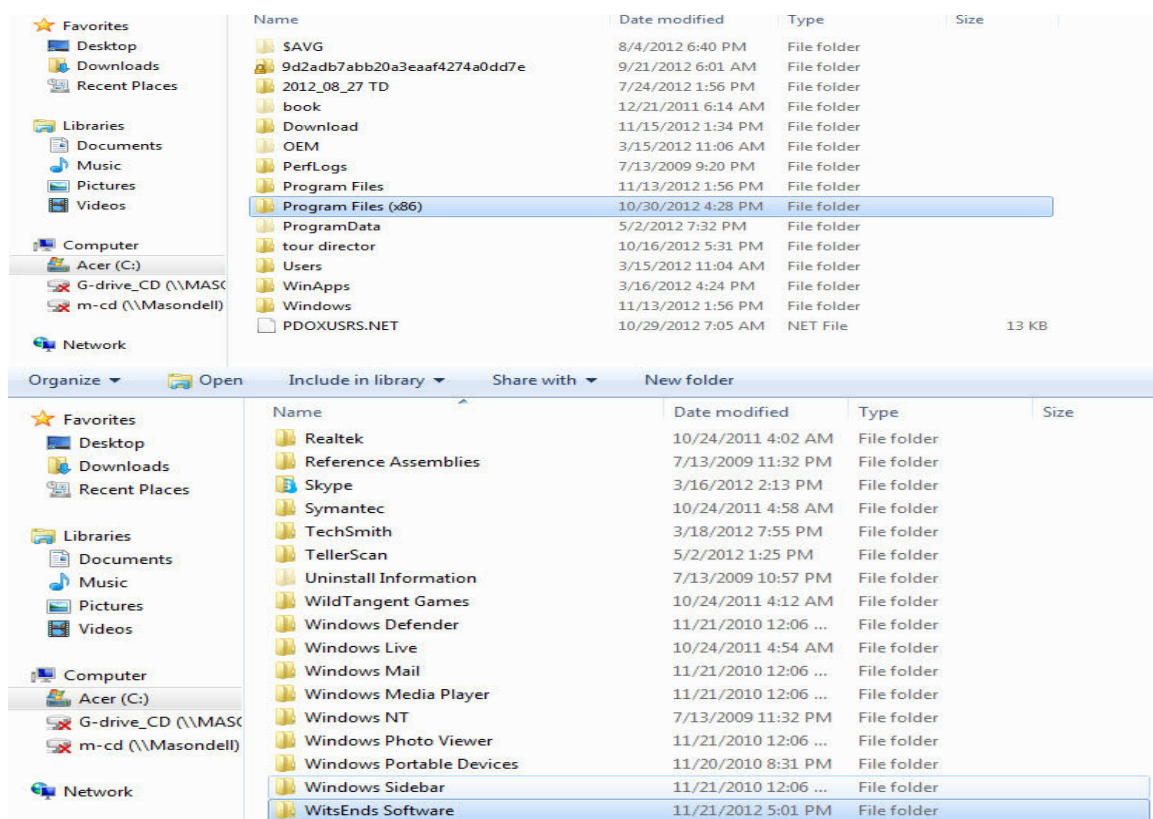
Windows 7 permissions for Chekscan (and ChekScan Lite – CSLite) November 29, 2012

To Summarize :

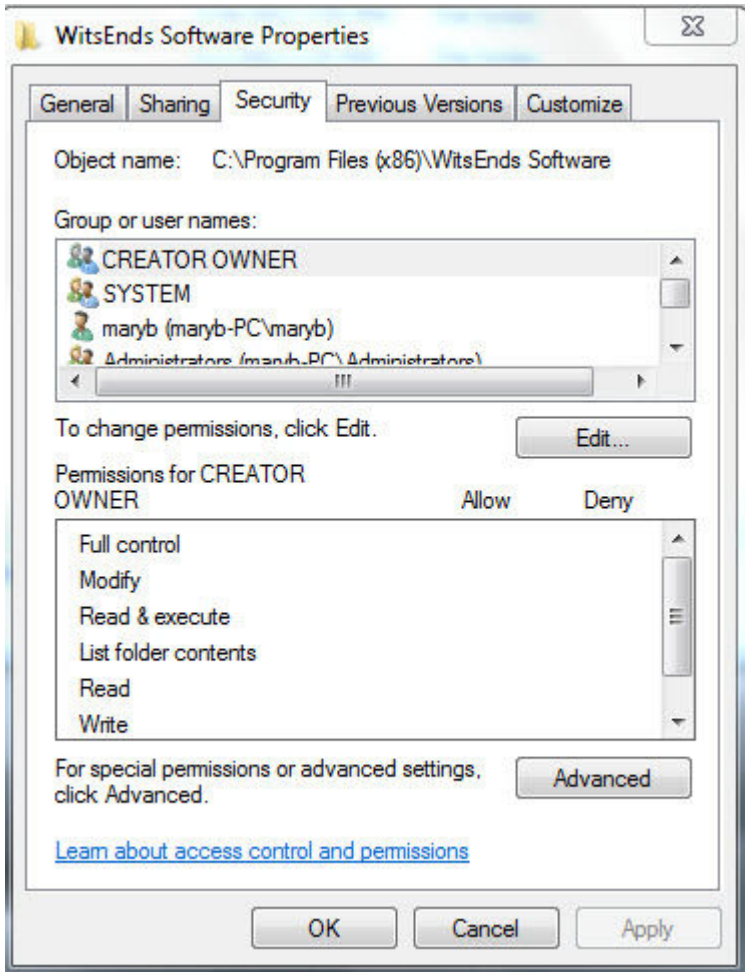
Windows 7 has security issues to address that XP mostly does not. Once ChekScan is installed by the installer, we must authorize the user to have control over the location of the files, and to get that control we have to take ownership, then set security permissions.

And since (on 64-bit versions of win7) the program is installed to ...program Files (x86)...we need to change both the location of images (In Chekscan) and (if using Paradox) redefine the database drivers using BDE Administrator so the program can find the data to update and read.

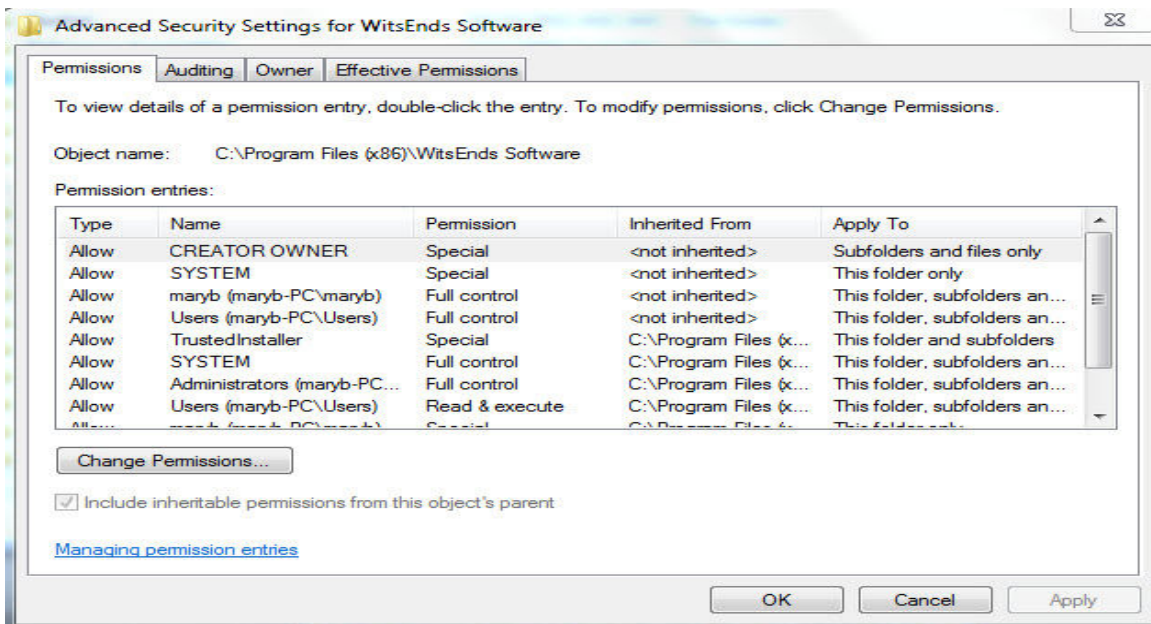
To be able to add permissions under Windows 7 64 bit to read and write to the Chekscan folders, We want to set ownership and permissions to the entire “WitsEnds Software” folder: ChekScan should have been installed in 64bit Windows 7 with User Account Control Turned off. Then, Using “My Computer”, choose “program files (x86).

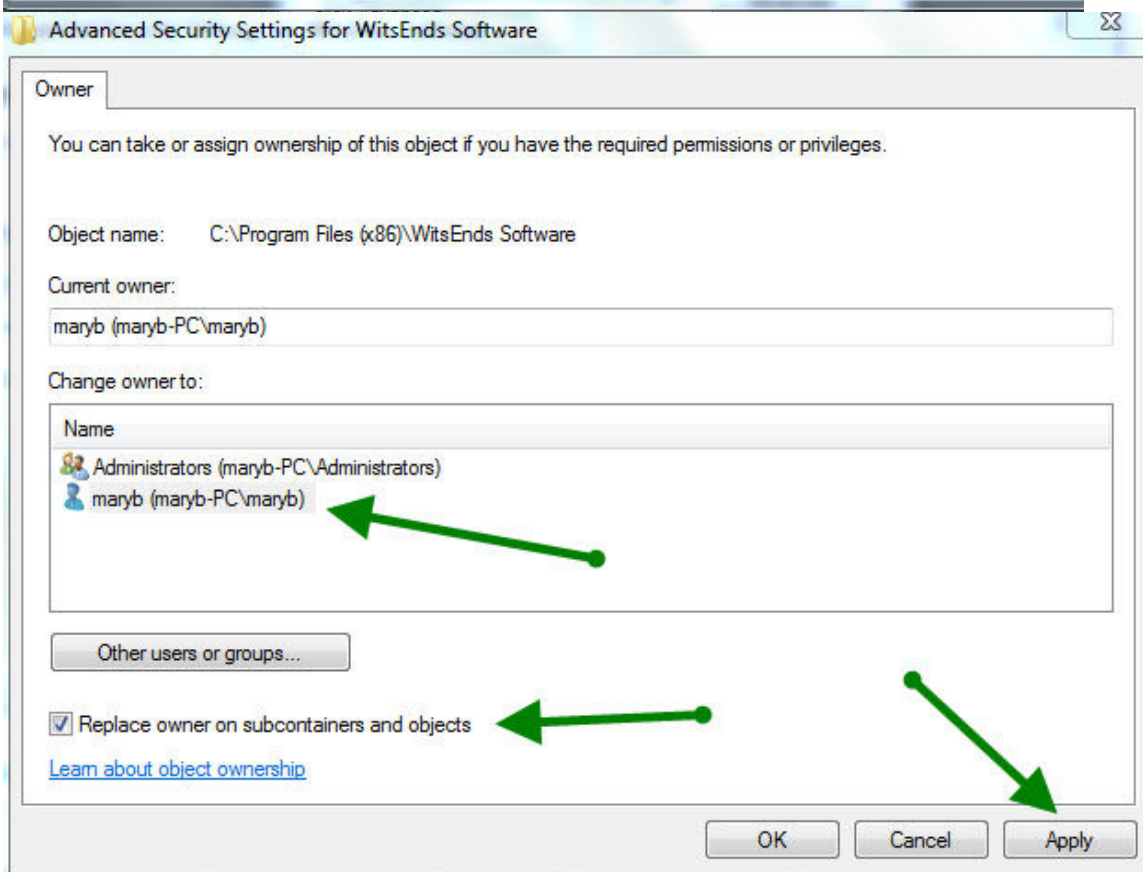
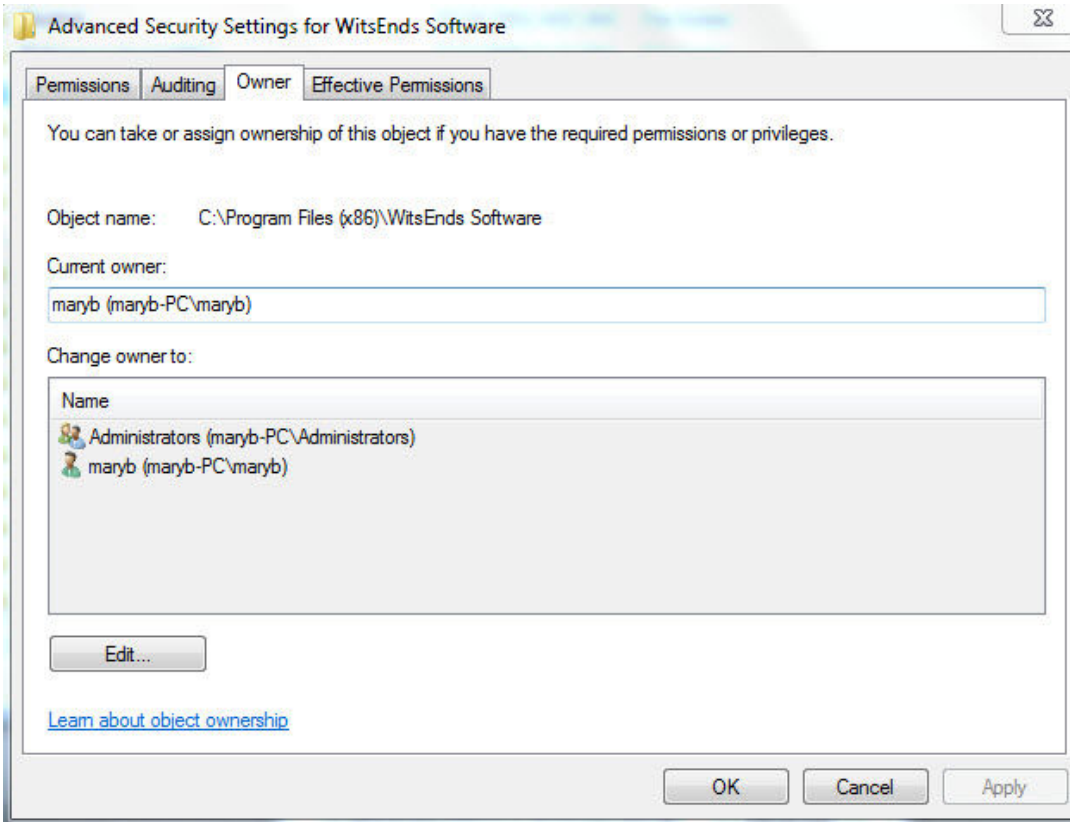


Highlight “WitsEnds Software” and right-click, then choose “properties”

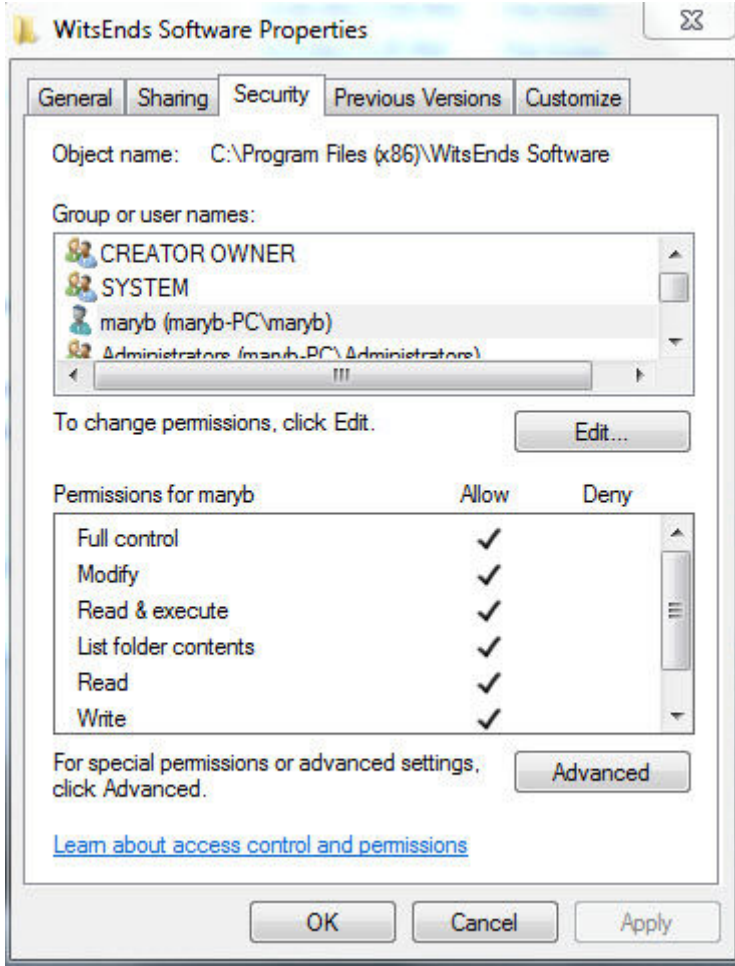


Then use “Advanced” to be able to set ownership





Now that the user has taken ownership, permissions can be set to allow “Full Control”

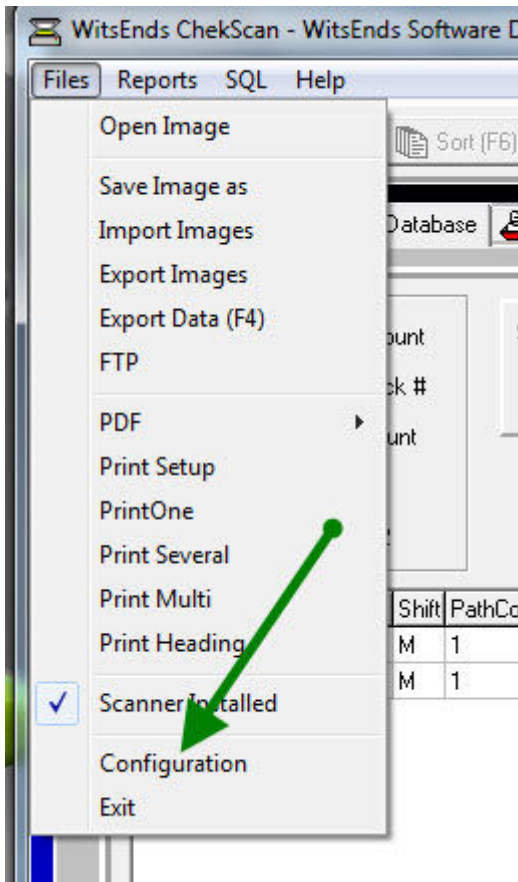


This will allow the program “ChekScan” to read and write files within its folder, create new folders for images automatically, update the ChekScan.ini file and update the database in the \Data Folder.

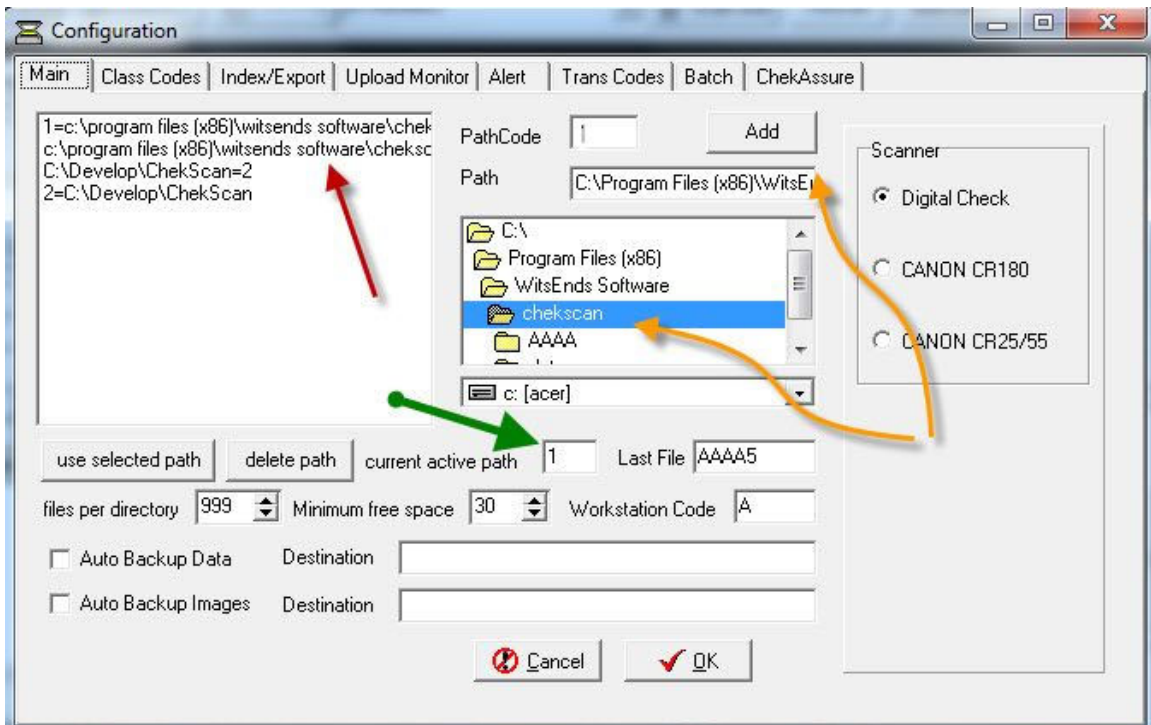
Adjusting image paths (pathcode) in Chekscan.
(Not Applicable or Needed to Chekscan Lite – CSLite)

Because in 64-bit Win 7 32 bit programs are installed to “program files (x86)” folder. We’ll need to tell the program where to store and find images.

Choose “Configuration” from the Files menu



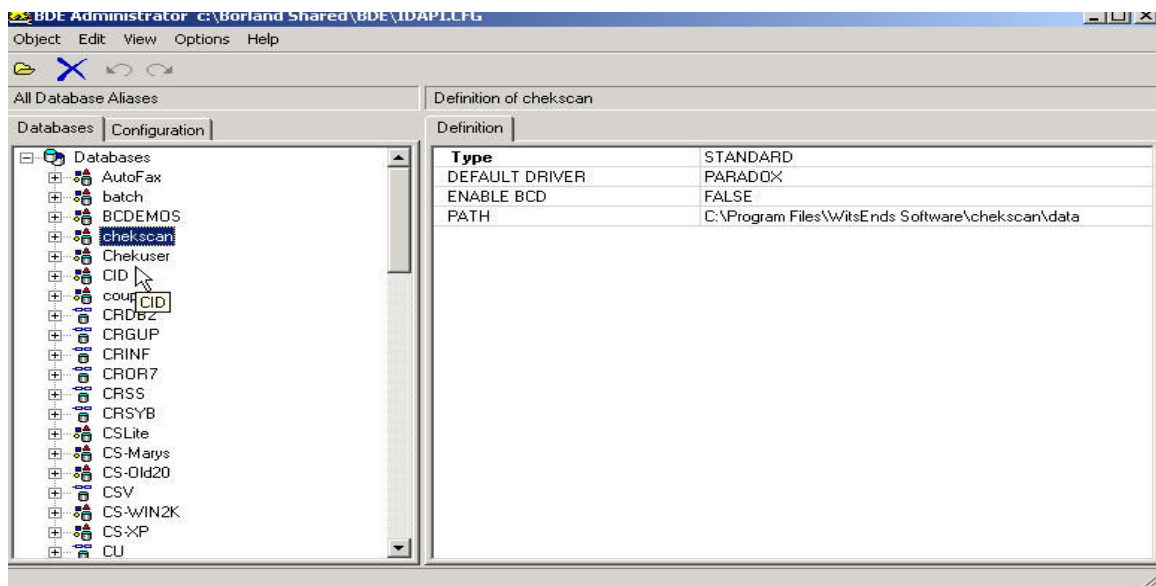
Then you'll see the first screen of configuration :



Notice a list of available paths in the upper left, and in the center “current active path”. To switch path # 1, highlight it in the upper left box, then choose “delete path”. Now use the “path” browse box to select “C:\program files (x86)\Chekscan”. This will be the root folder of where image folders are created (such as AAAA). Double click so that the correct path is shown in the path edit field, add a “1” in the “pathcode” field, and choose the “Add’ Button. This will create a new definition of path 1 that includes the (x86)...

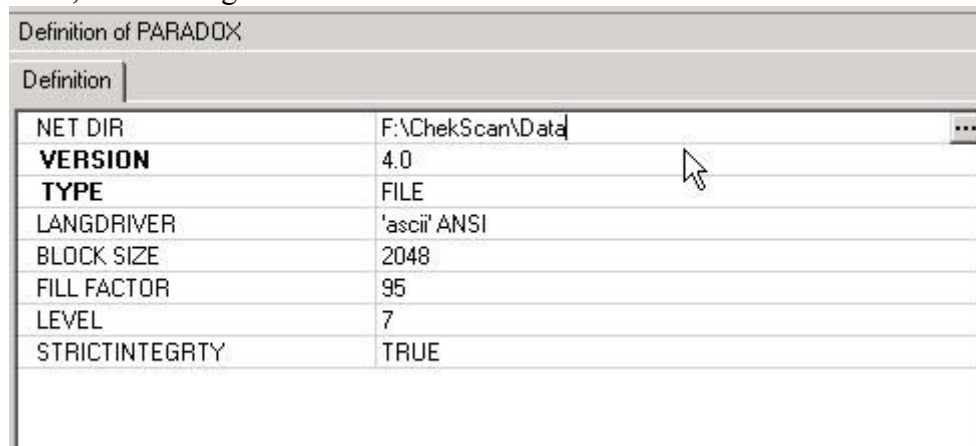
If you’re using Paradox Database enabled Chekscan or ChekScan Lite, you’ll need to modify the database drivers as well in a similar fashion:

From Control Panel applets, choose “BDE Administrator” (yellow Icon)



Choose either “ChekScan” or “CsLite” as Appropriate – Then edit the “Path” to use the new Program Files (x86) as described above.

Next, the “Configuration” tab is selected



In this screen, we want to change the “Net Dir” from the Default “C:\” to the location where the data is stored, in the “data” folder of “ChekScan” or “CSLite”. This “Net Dir” location is where database specific temporary files are created and managed, thus needs to have read/Write access.

This is because under Win 7 the Root C:\ is protected and rather than give write access to that location, we will change the location to a folder that already has read/write access to the user.